

TimeSlips
Creative Care
WISCONSIN PROJECT

TimeSlips

Creative Care

WISCONSIN PROJECT

TABLE OF CONTENTS

FISHING

Fresh Water Fishing
Hall of Fame and Museum
p 4-15



CIRCUS

Circus World Museum
p 16-27



KIDS

Madison Children's Museum
p 28-37



CHEESE

National Historic
Cheesemaking Center
p 38-47



PAINTINGS

Museum of Wisconsin Art
p 48-57



SHIPWRECKS

Maritime Preservation Program
Wisconsin Historical Society
p 58-67



Appearance Release p 68

WELCOME TO TimeSlips' Creative Care Wisconsin Project

TimeSlips is collaborating with Wisconsin museums to provide inspiration for creative conversations, stories, and activities with our elders. We believe that creative engagement is the most powerful and joyful way to connect with elders experiencing cognitive challenges.

But most people don't know about the impact of this simple approach. To remedy this, we are shaping a statewide celebration of the creativity of our elders through radio segments and a live-performance/installation with support from the National Endowment for the Arts. Here's how you can join us!

1

EXPLORE A MUSEUM

- **Pick a museum**, explore the content and engage elders in conversation, activities, or creative storytelling.

2

DOCUMENT

- **Document their contributions.** Here's how. When elders complete a story, invite them to read it aloud and audio record it with the voice memo feature on a smart phone. Hold the phone close to each person as they read. Limit the recording to under 2 minutes.
- You might also photograph the creative activities.
- Email stories, photos and voice memos to **info@timeslips.org**.
- Please be sure you have permission from elders to share their images and voices. We include a consent form in this packet to make it easy.

3

HOW IS IT GOING?

- Let us know how it is working. We will create 5 radio segments for Wisconsin Public Radio based on stories of the impact of creative engagement with people with memory loss and dementia.
- If you have a story to share with us of the impact of creative engagement on elders, their families, or staff/volunteers, let us know! Email: **info@timeslips.org**. Put "Impact Story" in the subject line.
- We might tell your story statewide!

4

ADD A MUSEUM

- Do you have a museum near you that you would like to engage?
- Email us and we will contact them and work with you to generate prompts.

Fresh Water Fishing Hall of Fame and Museum

Hayward, Wisconsin
www.freshwater-fishing.org



p6



p8



p10



p12



p14

Fresh Water Fishing Hall of Fame and Museum

www.freshwater-fishing.org

The highlight of the museum complex is a landmark “Shrine to Anglers” which is one-half city block long and four and one-half stories tall, of concrete, steel and fiberglass, hand-sculpted into the likeness of a leaping fish (a muskellunge). Its gaping, open jaw accommodates about 20 persons and reveals a wonderful panoramic view of Lake Hayward, the city of Hayward and, of course, our grounds. The “Big Musky” sits atop an 88,000 gallon pond.

The adjacent four-building museum complex houses over 50,000 sport fishing historical and vintage artifacts ranging from lures, rods, reels and accessories. Additionally, there are over 300 mounted fish and about 1000 antique motors on display.





CONVERSATION

- What do you think of fishing?
- Did you like it? Why/why not?
- What would you do with a fish like that?
- Do you have a story of fishing?

PROJECTS

- Go fishing with young volunteers, and teach them to fish.
- Write a recipe book for fish and include "fish tales" with recipes and give to family.
- How do fish move? Create a fish dance.

CREATIVE STORYTELLING

- Where do you want to say this takes place?
- When?
- What happened?
- What smells/sounds are in the picture?
- What do you want to name her?
- Is anyone else around her? Who?
- What will she DO with that?
- What happens next?





CREATIVE STORYTELLING

- What's happening?
- Where do you want to say this is?
- When?
- What sounds do you hear?
- What smells?
- What do you want to name them?
- How/what is he feeling?
- Who else is there?
- What are his hopes?
- What happens next?

PROJECTS

- Can you imagine a dialogue between the fish and fisherman?
- Write one line. Invite a staff, family or neighbor to write the next line. Create a short play together.





CONVERSATION

- What does it mean to say “gone fishing?”
- Why might we say it now?
- Have you ever “gone fishing?”

PROJECTS

- Think of someplace you would like to go as a treat to yourself. Make a sign that says Gone Fishing and hang it up before you go on your adventure. Keep a photo journal of your adventure (real or imagined). Share the stories and images with others.

CREATIVE STORYTELLING

- Who do you want to say “went fishing?”
- Where do you want to say they went?
- When do you want to say this takes place?
- What happened?
- What smells/sounds are in the picture?
- Is anyone else with them? Who?
- What happens when they get back?





CONVERSATION

- Have you spent time “Up North?”
- Can you share a story about “Up North?”

PROJECTS

- Inspired by this “record breaking fish” and museum, can you make a museum for your own records and notable achievements?
- What would you put on display? How?
- Invite students/volunteers to join you.
- Create a grand opening for your museum.

CREATIVE STORYTELLING

- What’s happening?
- Where do you want to say this is?
- When?
- What do you want to name them?
- How do they know each other?
- What sounds do you hear?
- What smells?
- How/what are they feeling?
- Who else is there?
- What are their hopes?
- What happens next?





CONVERSATION

- What are these?
- Have you ever used them?
- What words come to mind?
- Can we move like them?

PROJECTS

- What do you want to “catch” in your life?
- What “lure” might catch them?
- Can you make that lure?
- Create a display of your lures.

CREATIVE STORYTELLING

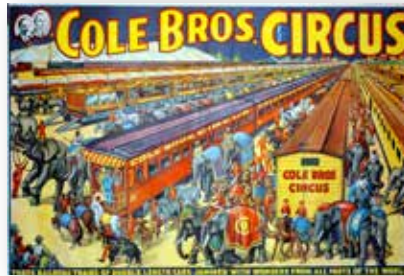
- Who do you want to say this belongs to?
- What do you want to say this is?
- Where do you want to say they are?
- What are they doing?
- What are their hopes?
- Do they succeed?
- What sounds are in the story?
- What smells?
- How are they feeling?

Circus World Museum

Baraboo, Wisconsin
circusworldbaraboo.com



p18



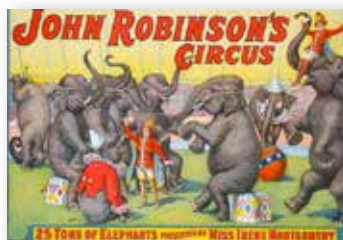
p20



p22



p24

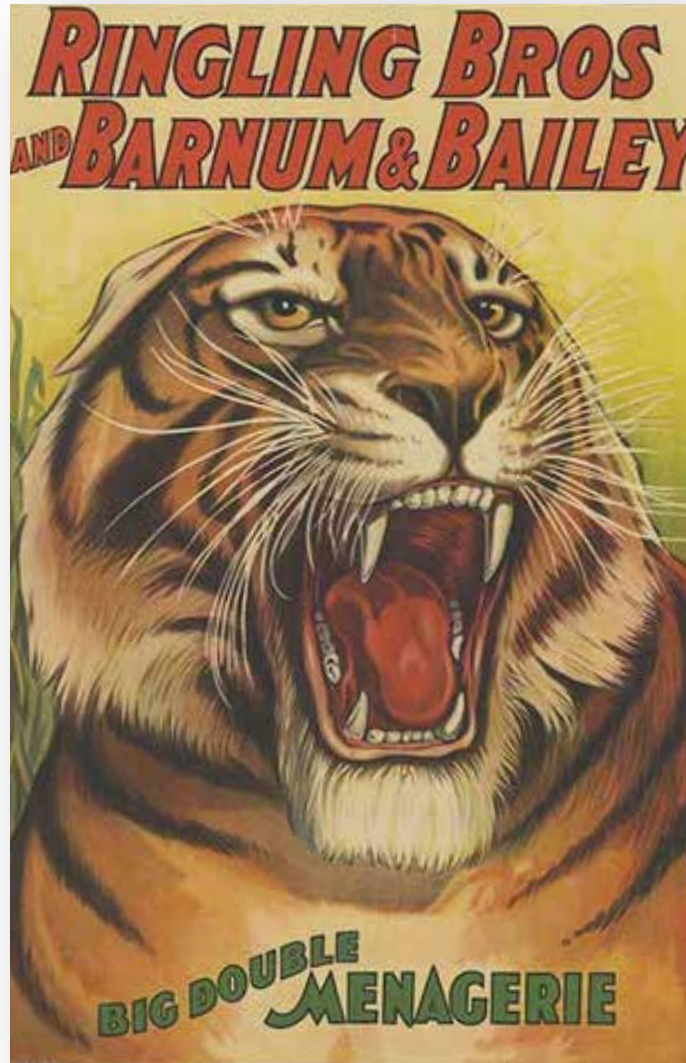


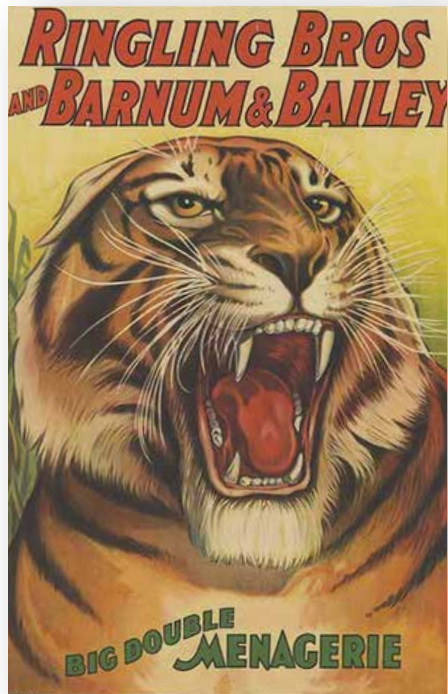
p26

Circus World Museum

www.circusworldbaraboo.com

Circus World in Baraboo is one of America's favorite circus attractions. Baraboo was home to The Ringling Bros. Circus from 1884 thru 1918, and during those thirty-four years the operation grew to become the largest circus enterprise the world has ever known. Although the Ringlings left in 1918, many of their original structures survived. During the summer months, Circus World comes to life with daily live shows and demonstrations. See the world's largest collection of glorious parade wagons plus 7 authentic Ringling Bros. buildings filled with colorful, big top memories. Enjoy elephant, pony and carousel rides; cotton candy, ice cream, tasty sandwiches and 2 gift shops. Experience a live circus performance and exciting illusion shows with magician Tristan Crist. Experience the thrill that never grows old at Circus World!





CONVERSATION

- What do you feel about circuses?
- Would you go to a circus today?
- What might we see? Hear?

PROJECTS

- Write a collage of words about your memories of the circus — particularly the animals.
- Find or draw images/colors of the animals.
- Add the words to the images.
- Give the gift of a circus to someone.

CREATIVE STORYTELLING

- Where/when do you want to say this takes place?
- What do you name it? (he/she?)
- What smells/sounds are in the picture?
- What is he/she like?
- What does he/she dream of?





CONVERSATION

- Did you ever dream of having a wild animal as a pet? Which kind?
- Did you ever see a circus train? What was it like?

PROJECTS

- Design and hold your own circus from things and people you have at hand.
- What talents (silly or impressive) do you have?
- How might you turn that into an “act?”
- What would you name your circus?
- Who would star in it?
- Who would be the “barker”
- Can your circus travel to another place to entertain another group?

CREATIVE STORYTELLING

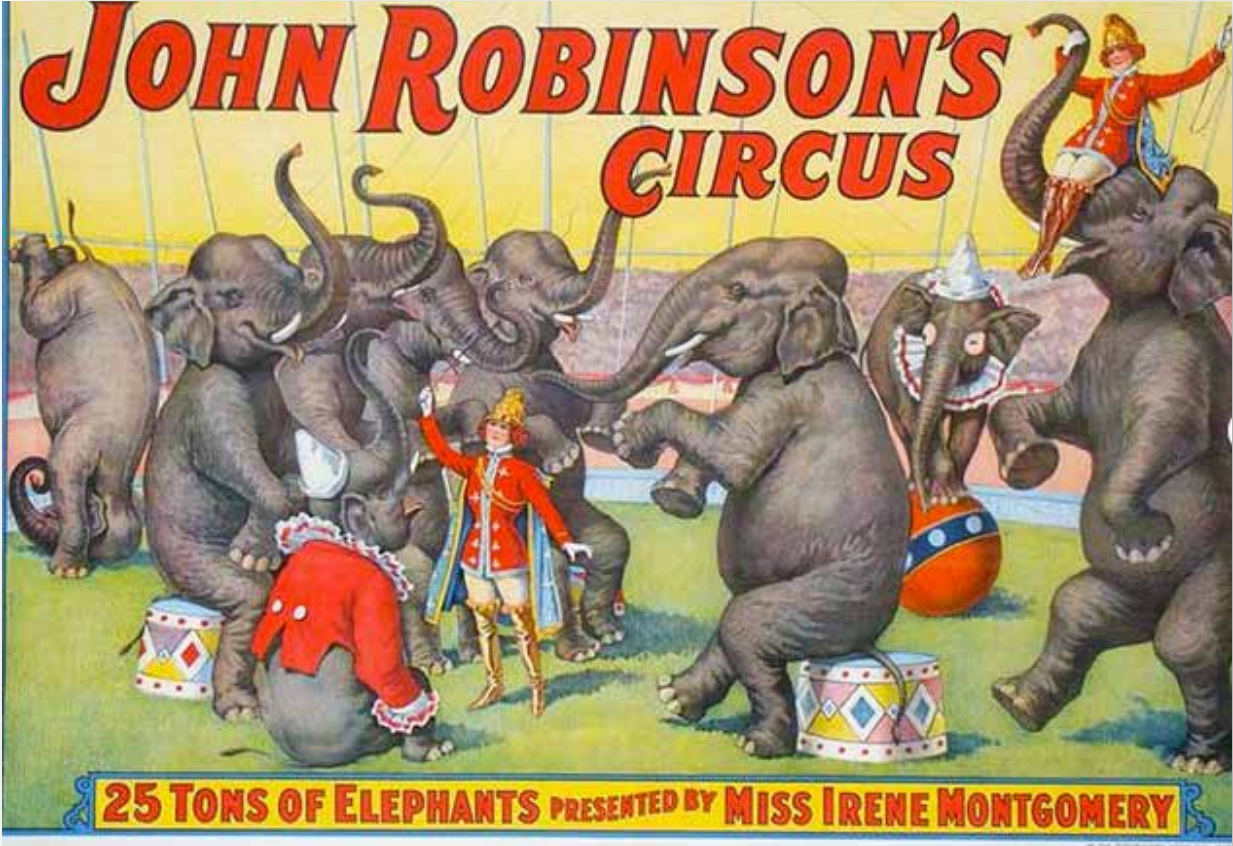
- What’s happening?
- Where do you want to say this is?
- When?
- What sounds do you hear?
- What smells?
- Who is on board?
- Where are they going?
- Do they make it?
- What surprises happen along the way?

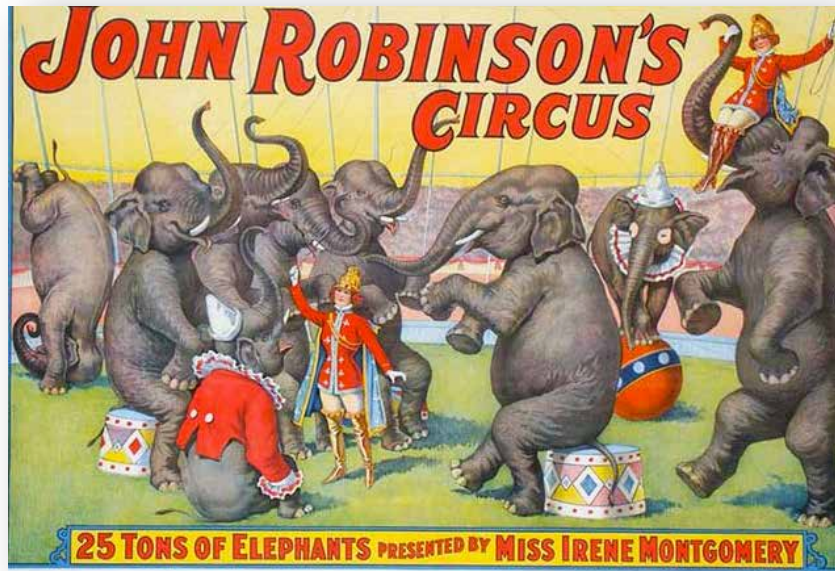




CREATIVE STORYTELLING

- Where do you want to say this is?
- When?
- Where are they heading?
- What do you want to say happens along the way?
- What do you want to name the people?
- How do they know each other? Do they?
- What are they thinking?
- Where are their families?
- What do you want to name the animals?
- What do you want to say about them?
- What sounds do you hear in the story?
- What smells?
- What happened just before this moment?
- What happens next?





PROJECTS

- Create a poem about elephants. Respond to each question on a line. Feel free to include multiple answers.
 - How do they feel?
 - How do they look?
 - What sounds do they make?
 - How do they move?
 - What do they dream of?
- If you could create a sculpture of an elephant, what material would you use? Can you create it?

CREATIVE STORYTELLING

- What's happening?
- Where do you want to say this is?
- When?
- What do you want to name them?
- Do they know each other? How?
- What sounds do you hear?
- What smells?
- How/what are they feeling?
- Who else is there?
- What are their hopes?
- What happens next?





CONVERSATION

- What are the qualities of a clown?
- What might you do that would make people think you are a clown?

PROJECTS

- Create your own clown character.
- What do they love?
- What are they afraid of?
- What do they dream of?
- Try on a red nose and bring your clown to life!

CREATIVE STORYTELLING

- Where/when do you want to say this takes place?
- What do you name them?
- What smells/sounds are in the picture?
- What is he/she like?
- What does he/she dream of?
- Where are they from?
- Where are they going?

Madison Children's Museum

Madison, Wisconsin
www.madisonchildrensmuseum.org



p30



p32



p34



p36

Madison Children's Museum

www.madisonchildrensmuseum.org

Play's a serious thing, you see. It's how we learn to invent, share, and explore. Kids who play do better in school. Adults who play do better with each other. And nobody does play better than Madison Children's Museum. Where there's always something fun to do. Where eyes get bigger, laughs get louder, and families get closer, too. Make a discovery or a mess or a brand new friend.





CONVERSATION

- Some people are afraid of mice. Are you? Why/why not?
- This scene is from a miniature, like a doll house, but for mice! Did you have any miniatures? Why do people have them?
- What would you create a miniature of? Why?

CREATIVE STORYTELLING

- Where do you want to say this takes place?
- When?
- What's happening?
- What smells/sounds are in the picture?
- What do you want to name them?
- What happens next?

PROJECTS

- Can you create a miniature?
- Sometimes picking very large things to make very small can be fun. Or putting non-human things into human settings.





CONVERSATION

- What are some of your favorite animals?
- Why?
- Where do you see them?

PROJECTS

- Create sock puppets.
- Invite staff, volunteers and family to do this with you.
- Stage a short play using your puppets.

CREATIVE STORYTELLING

- What's happening?
- Where do you want to say this takes place?
- When?
- What do you want to name him/her?
- What sounds do you hear?
- What smells?
- How/what are they feeling?
- Who else is there?





CONVERSATION

- Did you grow up around farm animals? Can you share a story about it?
- In England, some elders have hens as pets. Would you like that? Why/not?

PROJECTS

- Go on an outing or bring in chicks to see as they grow into chickens.
- Congressman John Lewis tells a story about preaching to the chickens when he was young. What might you say to a chicken?
- Create a word collage about a chicken. Share it with a local farmer.

CREATIVE STORYTELLING

- What is she doing?
- Where do you want to say they went?
- When do you want to say this takes place?
- What do you want to name them?
- What smells/sounds are in the picture?
- Is anyone else with them? Who?
- What happens next?





CONVERSATION

- Why does one look through binoculars?
- Have you ever looked through binoculars? Can you share a story about it?

PROJECTS

- What if you could make a magic pair of binoculars — what would you like to see?
- Create a panel/drawing for each answer and create a bulletin board of your visions.
- Invite staff, volunteers and family to do this with you.
- Create an huge pair of binoculars. Give them to someone and ask them what they can see. Keep a journal of the responses and display them.

CREATIVE STORYTELLING

- What's happening?
- Where do you want to say this is?
- When?
- What do you want to name him/her?
- What does he/she see?
- What sounds do you hear?
- What smells?
- How/what are they feeling?
- Who else is there?

National Historic Cheesemaking Center

Monroe, Wisconsin
www.nationalhistoriccheesemakingcenter.org



p40



p42



p44



p46

National Historic Cheesemaking Center

Monroe, Wisconsin

www.nationalhistoriccheesemakingcenter.org

Escape to America's Dairyland with a visit to the National Historic Cheesemaking Center and Museum located in the heart of cheese country. Monroe, known as the "Gateway to Cheese Country" and the "Cheese Capital of the U.S.A.", is a small historic community in south central Wisconsin rich in heritage, tradition, technology, and the hard work of dairying and cheesemaking. An area rich in "Cheese, Beer and Wine" conveniently located just 45 miles southwest of Madison, Wisconsin and 95 miles northwest of Chicago, Illinois.

Envision the manual labor from its humble beginnings in a single farmstead factory in the mid 1850's, to the first Wisconsin limburger cheese factory in 1868, and to a time in the 1900's when more than 300 factories dotted the countryside. Discover the leadership and innovation that Monroe area cheesemakers have provided throughout the years, molding Wisconsin into the country's premier quality cheese producer.

At the National Historic Cheesemaking Center and Museum, the past comes alive with tours led by knowledgeable veteran cheesemakers and docents. Then, enter"an era that was, that will never be again" as you step inside the Imobersteg Cheese Factory, restored and located on our campus, where each year on the second Saturday of June a 90 pound wheel of Swiss cheese is made right before your eyes, as it was done over 100 years ago.

Our docents provide area information for Monroe, New Glarus and the entire "Little Richland Valley", for lodging, restaurants, cheese retail stores, attractions and all that Monroe and Green County has to offer.

"CHEESE IS OUR CULTURE"





CONVERSATION

- Have you been on a farm like this?
- This is actually a miniature model of a farm, on display at the Center. The barn is about 6 inches tall.
- How do you imagine the artist made these elements?
- Have you ever created a miniature?
- Why do people create miniatures?

PROJECTS

- Imagine something you would like to create in miniature.
- Why did you choose this?
- Try making it!

CREATIVE STORYTELLING

- Where/when do you want to say this takes place?
- What name do you want to give the farm/family?
- Who all lives on the farm?
- What do they do for fun?
- What smells/sounds are in the picture?
- What do they raise?
- Are they successful?
- What does the future hold for them?





CONVERSATION

- Did you ever drink milk or cream fresh from a farm?
- What was it like?

PROJECTS

- Invite a school group to do a project called "The evolution of milk."
- See if you can get a dairy farmer to Skype or visit in person and bring fresh milk.
- Taste different kinds of milk with the kids.
- Write collage poems in response, beginning with This Milk Reminds Me Of...
- Create your own "Got Milk?" posters, taking photographs of each other with milk mustaches and their individual poems underneath.

CREATIVE STORYTELLING

- What's happening?
- Where do you want to say this is?
- When?
- What are they doing? (Hint, the painting is called "Hauling Milk")
- What sounds do you hear?
- What smells?
- Who is on board?
- How do they know each other?
- Where are they going?
- What will happen next?
- What surprises happen along the way?





CREATIVE STORYTELLING

- What do you want to say he is doing?
- Where do you want to say this is?
- When?
- What do you want to name them?
- What do you want to say he is thinking?
- Feeling?
- How do they know each other? Do they?
- What sounds do you hear in the story?
- What smells?
- What happened just before this moment?
- What happens next?
- What does he wish for?

SPOILER ALERT: Read this AFTER you create your own story!

This photo shows cheesemakers putting the cheesecloth strainer into the copper kettle to capture the curds in order to press them into cheese in the pre-industrial way of making cheese. Cheesemakers had to be very strong!





CONVERSATION

- Let's talk about cheese. What are your favorite kinds? Why?
- Why do you suppose Wisconsin became known for cheese.

PROJECTS

- Do some research on how to make cheese (check the Center's website!)
- Try to make your own cheese. What kind would you try?
- Try this with a partnering school group (each make your own cheese) and have a taste test competition for the best one.
- Write a collage poem about cheese. How does it taste/smell? What does it make you think of?

CREATIVE STORYTELLING

- What do you want to name him?
- Is anyone else nearby? Who?
- What sounds do you hear?
- What smells?
- How/what is he feeling?
- What are their hopes?
- What happens next?

Museum of Wisconsin Art

West Bend, Wisconsin
www.wisconsinart.org



p50



p52



p54



p56

Museum of Wisconsin Art

West Bend, Wisconsin
www.wisconsinart.org

The Museum of Wisconsin Art (MOWA) explores the art and culture of Wisconsin. Founded in 1961, MOWA is one of the top museums of regional art in the United States, with almost 5,000 works of contemporary and historic art by more than 350 artists. Through rotating exhibitions and educational programs, MOWA provides an innovative forum for the culturally engaged.

In 2013, MOWA opened its new 32,000-square-foot facility in downtown West Bend. The building, the first museum commission by acclaimed architect Jim Shields of HGA Architects, is situated along the west bend of the Milwaukee River on a triangular plot of land that inspired the facility's modern wedge shape. An expansive wall of windows follows the curve of the river bank and minimizes the boundaries between interior and exterior. The museum houses five permanent collection galleries, three temporary exhibition spaces, and two classrooms as well as visible art storage, a shop, and a large atrium for public events.

In the fall of 2016 the MOWA organized a major exhibition of paintings by David Lenz, one of America's preeminent portrait painters. Featured in this guide are several works from that exhibition.





CREATIVE STORYTELLING

- What do you see?
- What do you want to name them?
- Where do you want to say this takes place?
When?
- What are they doing?
- How do they know each other?
- What sounds do you hear in the story?
- How are they feeling?
- Who else is nearby? What are they doing?
- How long do they stay out there?
- What do they do next?
- What do they dream of?





CONVERSATION

- How do you feel about fishing?
- Do you have stories about fishing you could share?
- What made you this happy in the summer as a child?

PROJECTS

- Write a word collage/poem about a perfect summer day.
 - Summer
 - Where?
 - Who is with you?
 - What are you doing?
 - Summer
 - How do you feel?
 - What sounds do you hear?
 - What are you dreaming about?
 - What are the colors of this moment?
 - Summer

CREATIVE STORYTELLING

- What do you want to name them?
- Where do you want to say this takes place? When?
- What are they doing?
- How do you want to say they know each other?
- What are they like?
- Who else is around?
- What sounds do you hear in the story?
- What is the feeling in this moment?
- What happened just before this moment?
- What happens next?





CONVERSATION

- What are your feelings about winter?
- Have they changed over time?
- Can you share a story about winter as a child?

PROJECTS

- Create a story of the perfect winter's day for a child.
- Make a recording of what voices would sound like on that perfect winter's day.
- Invite children to do the same (tell their story of a perfect winter's day, and record the sounds of that day).
- Talk about the similarities and differences — have the perfect winter's day changed over generations?
- Go on an outing with the children on a winter's day.

CREATIVE STORYTELLING

- Where do you want to say this takes place?
- When?
- What happened?
- What smells/sounds are in the picture?
- What do you want to name her or him?
- Is anyone else around her or him? Who?
- What will she or he do with that?
- What happens next?





CONVERSATION

- Have you ever blown bubbles?
- What happens to bubbles?
- How do bubbles make people feel?

PROJECTS

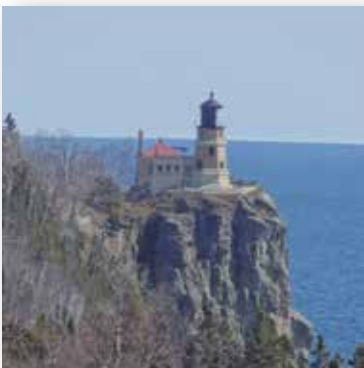
- Bubble gifts: secretly bring bubbles into a place and begin blowing them as a surprise to people. Example, an outing to a grocery store, or a doctor's waiting room.
- Write a poem about how bubbles make people feel.
- Offer "bubble therapy" to people by inviting them to join you blowing bubbles. This could include staff, visitors, family members etc.

CREATIVE STORYTELLING

- What's happening?
- Where do you want to say this takes place?
- When?
- What do you want to name them?
- How do they know each other?
- What's the weather like?
- What sounds do you hear?
- How/what are they feeling?
- What are their hopes?
- What happens next?

Maritime Preservation Program Wisconsin Historical Society

Madison, Wisconsin
www.wisconsinshipwrecks.org



p60



p62



p64



p66

Maritime Preservation Program Wisconsin Historical Society

Madison, Wisconsin
www.wisconsinshipwrecks.org

For more than 25 years, the Maritime Preservation Program, Wisconsin Historical Society, and the University of Wisconsin Sea Grant Institute have engaged in a beneficial partnership to explore, document and share stories of Wisconsin's maritime past. Learn more at wisconsinshipwrecks.org

Background information on photos:

Split Rock Light Station | p 49: Shipwrecks from a 1905 November gale inspired the construction of this facility. During that storm, 29 ships were damaged. The lighthouse was completed by the U.S. Lighthouse Service in 1910 in Two Harbors, Minn., along the Lake Superior shore and at a cost of \$75,000 federal dollars. It was then accessible only by water. The station closed in 1969, when modern navigational equipment made the light station obsolete. The state of Minnesota obtained it in 1971. It is now restored to its 1920s appearance and offers a glimpse of lighthouse life from a time long ago.

Appomattox | p 51: This ship, built in 1896, was the largest wooden bulk steamer ever constructed on the Great Lakes, and possibly in the world. The ship would haul Lake Superior iron ore on eastward voyages and bring coal when she went west. The iron ore capacity exceeded 3,000 tons. She also generally towed a large schooner barge as well. One of those schooner barges was the 324-foot Santiago. On Nov. 2, 1905, the Appomattox was again towing the Santiago, both loaded with coal. The pair was proceeding southward along the west shore of Lake Michigan when they encountered a dark bank of dense, industrial smoke. The combination of fog and smoke obscured the range lights on the north end of Milwaukee. The vessels ventured in too close to shore, and they went aground on a rocky bottom near North Point. Parts of this shipwrecked vessel can now be seen, from shore, near Atwater Beach Park in Shorewood, Wis.

Home shipwreck | p 53: Collision damage is evident at the bow of the schooner Home where she was rammed by the schooner William Fisk. The Home's port side anchor now rests in the sand. This wreck is located in Lake Michigan, near Manitowoc. It sank in 1858 and no lives were lost. The ship had been carrying lumber. It was built in 1843 and its home port had been Chicago.

Crew of the Rouse Simmons | p 51: Captain Herman Schuenemann is pictured in the center of the photo. Two unidentified crew members flank him. All three perished when they and 13 others aboard the Rouse Simmons sank during a storm on Lake Michigan. For 20 previous years, Schuenemann sold Christmas trees directly from the decks of various ships he sailed from small towns along Lake Michigan to holiday-makers in Chicago or Milwaukee. On Nov. 22, 1912, his three-masted schooner left port in Michigan. On its second day, it sailed into the teeth of a northwest gale and hoisted a distress flag. As rescuers raced around a point near Two Rivers, Wis., to lend assistance, the ship had already vanished. For years afterward, Christmas trees washed ashore. To this day, many other trees are still in the ship's hold, denied to would-be festive homes in the big city and lying as a testament to those who lost their lives while trying to bring seasonal cheer.





CONVERSATION

- Have you visited a lighthouse? Can you share a story about it?
- What kind of people lived in lighthouses?
- How has the technology of lighthouses evolved?

PROJECTS

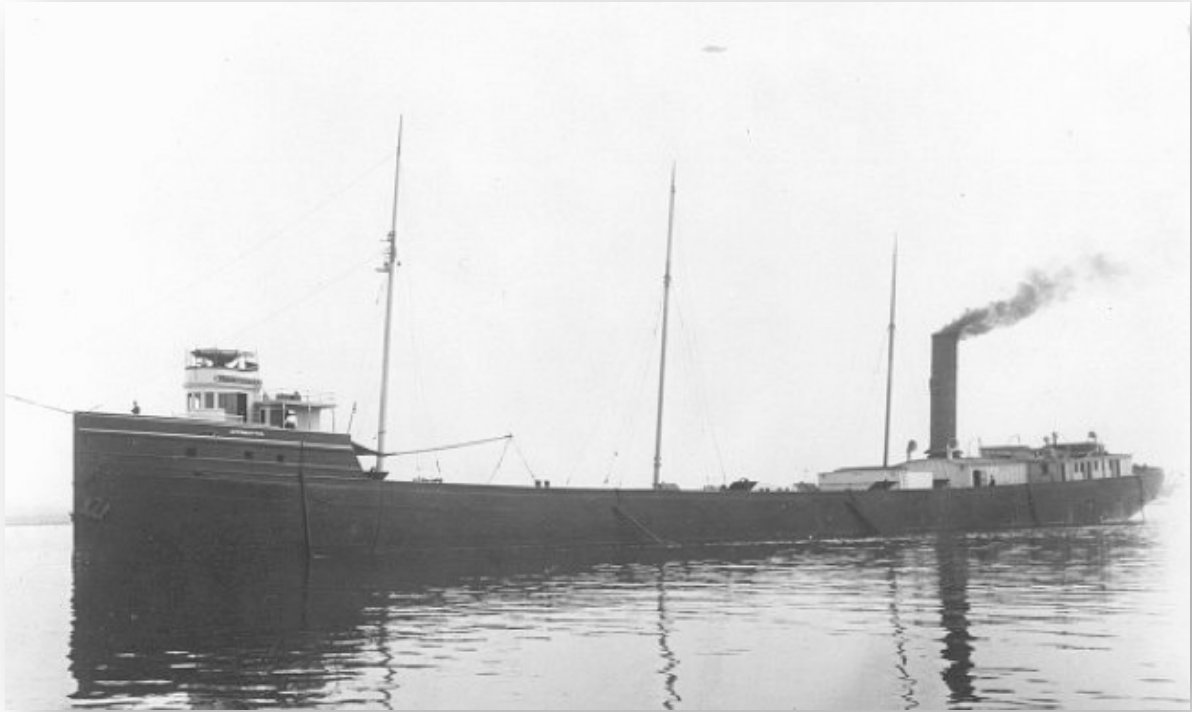
- Lighthouses warn people about danger. What/who is your lighthouse? What do they protect you from? Can you draw a picture of it/them? Or gather words about them into a collage?

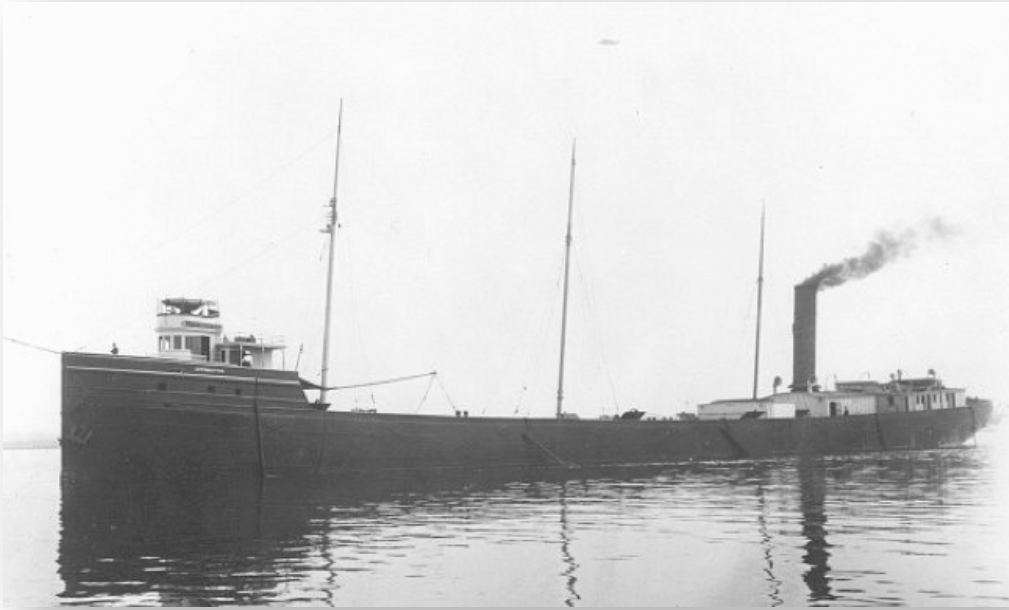
CREATIVE STORYTELLING

- Where/when do you want to say this takes place?
- Who do you want to say lives there? What are they like?
- What smells/sounds are in the picture?
- What do they do for fun?

Maritime Preservation Program
Wisconsin Historical Society

*Photo credit: Marie Zhuikov
University of Wisconsin, Sea Grant Institute*





CONVERSATION

- Have you been on a ship?
Can you share a story about it?
- How has boat/ship travel changed?

PROJECTS

- Draw and name your own ship. Make a map of where it goes and who it picks up along the way. (Note: it can be a magic ship)
- Invite people to join you on your journey.
- Create passports for those on the trip if you are traveling internationally.
- Research the flora and fauna of the places you travel and create a “naturalist” who can share lectures about it.

CREATIVE STORYTELLING

- What’s happening?
- Where do you want to say this is?
- When?
- What sounds do you hear?
- What smells?
- Who is on board?
- Where are they going?
- Do they make it?
- What surprises happen along the way?

Maritime Preservation Program
Wisconsin Historical Society

Photo credit: Wisconsin Historical Society





CREATIVE STORYTELLING

- Where do you want to say this is?
- When?
- Where was it heading?
- What do you want to say happened along the way?
- What did it have on board?
- Do people visit the ship now?
- Who? Why?
- What stories do they tell about this ship?
- Is it remembered? Honored? How?
- What does the water feel like?
- Who discovered the ship and how?
- What happens next?

Maritime Preservation Program
Wisconsin Historical Society

Photo credit: Wisconsin Historical Society





CREATIVE STORYTELLING

- What's happening?
- Where do you want to say this is?
- When?
- What do you want to name them?
- How do they know each other?
- What sounds do you hear?
- What smells?
- How/what are they feeling?
- Who else is there?
- What are their hopes?
- What happens next?

Maritime Preservation Program
Wisconsin Historical Society

Photo credit: Wisconsin Historical Society



TimeSlips partners with elders to create art with their stories. These might be radio pieces, poems, books, posters, or plays. This release enables us to use your stories, images, voices to create the artwork to share with the general public in order to change the way we see aging and older people. Thank you for sharing your stories with us!

APPEARANCE RELEASE

For good and valuable consideration, receipt of which is hereby acknowledged, I authorize TimeSlips Creative Storytelling Inc. ("Producer") and their respective parents, affiliates, subsidiaries, licensees, successors and assigns to make use of my appearance in their online educational materials ("Program") and in connection with Producer and/or Company or otherwise.

I agree that you may tape and photograph me, and record my voice, conversation and sounds, including any performance of any musical composition(s), during and in connection with my appearance and that you shall be the exclusive owner of the results and proceeds of such taping, photography and recording with the right, throughout the world, an unlimited number of times in perpetuity, to copyright, to use and to license others to use, in any manner, all or any portion thereof or of a reproduction thereof in connection with the Program or otherwise. For purposes of clarity, I expressly waive any and all moral rights I may have in connection with my appearance.

I further agree that you may use and license others to use my name, voice, likeness in any and all media and in the promotion of the Program and/or otherwise and ancillary products in connection with the Program and in connection with Producer and/or Company or Company's affiliated services, throughout the world in all media, an unlimited number of times in perpetuity.

I acknowledge that you will rely on this permission potentially, at substantial cost to you and hereby agree not to assert any claim of any nature whatsoever against anyone relating to the exercise of the permissions granted hereunder.

Name (Please Print): _____

Signature: _____

Address: _____

Date: _____

City/State/Zip: _____

Phone # _____

Name (Please Print): TimeSlips Creative Storytelling, Inc.

TimeSlips[™]

CONNECT THROUGH CREATIVITY

www.timeslips.org

TimeSlips[™]

CONNECT THROUGH CREATIVITY

www.timeslips.org

917.721.1966 • 4461 N. Lake Dr.
Milwaukee, WI 53211